

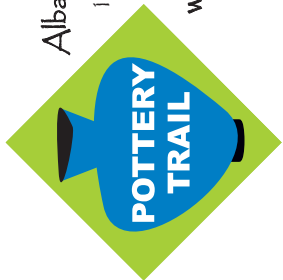
Receive a duplicate? Please pass this one on.

Albany Saratoga Pottery Trail

175 Jay Street

Schenectady, New York 12305

www.AlbanySaratogaPotteryTrail.com



# Albany Saratoga Pottery Trail



Victoria Crowell Studio

Two Spruce Pottery

Ballston Lake Pottery



Liz Vigoda Pottery

Ambrosia Porcelain



Doug Klein Pottery

Blue Moon Clay Studios

Ulla's Pottery

A tour of seven clay studios in New York's Capital Region

# Albany Saratoga Pottery Trail

A tour of seven clay studios in New York's Capital Region



Eight contemporary potters of the Albany Saratoga Region invite you to travel the Pottery Trail to watch us creating handmade ceramics in studios tucked away throughout the area.

We welcome you to meet the potters, browse the shops, see the kilns, and watch the hands of the artists form soft earth into timeless, contemporary ceramic vessels.

Throughout the year our showrooms remain open for shopping, classes, and orders. Share our love of handmade pottery any time by visiting the seven individual studios of the Albany Saratoga Pottery Trail.



Visit us all year round and join us for our **Special Open Studios Weekend with Event Discount Coupon** April 26-27, 2008 10AM to 6PM

Please visit us on the web at [www.AlbanySaratogaPotteryTrail.com](http://www.AlbanySaratogaPotteryTrail.com) for an Event Discount Coupon!



# Albany Saratoga Pottery Trail



Visit us all year round and join us for our  
**Special Open Studios Weekend**  
 with Event Discount Coupon  
**April 26-27, 2008 10AM to 6PM**



**Blue Moon Clay Studios**   
 Brenda McMahon  
 2242 Route 113 Greenwich, New York 12834  
 518.692.7742 brenda@bluemoonclay.com www.bluemoonclay.com  
 Open April through October by appointment or by chance

**Guest: Tom Radca**  
 15216 Grove Road, Port Washington, OH  
 (740) 498-4303 tom@tomradca.com  
 www.tomradca.com

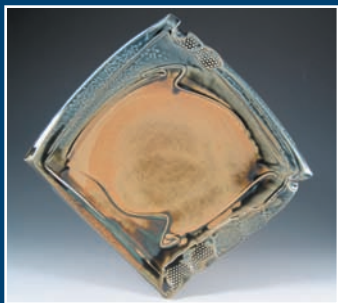
**Directions** – Northway I-87 to exit 14, bear right (east). Turn right at first light, follow signs for Schuylerville. Turn right onto Rt. 29, go 10 miles. Cross Hudson River, turn right at flashing light, onto Rt. 113. Go south 3.4 miles, studio is on the left. From the junction of Rt. 40 and Rt. 29: take 29 west for 2 miles. At blinking lights, turn left onto Rt. 113. Studio is 3.4 miles on left.




**Doug Klein Pottery**   
 Formerly Saratoga Clayworks  
 Doug Klein  
 100 Burgoyne Road Schuylerville, New York 12871  
 518.695.3602 www.dougleinpottery.com  
 Open year round by appointment.

**Guest: John Visser**  
 saltkiln@hotmail.com

**Directions** – Northway I-87 to exit 14, bear right (east). Turn right at first light, follow signs for Schuylerville. Turn right onto Rt. 29, go 8 miles. Turn right at Schuyler Farms onto County Rt. 338. Saratoga Clayworks is 0.5 mile on the right, next to the Saratoga Battle Monument. County Rt. 338 is 0.5 mile from Rt. 4.



**Ballston Lake Pottery**   
 James Sankowski  
 906 State Route 50 Ballston Lake, New York 12019  
 518.399.1039 jsankowskipottery@hotmail.com www.ballstonlakepottery.com  
 Tuesday - Saturday – 11 a.m. - 5:30 p.m. Sunday by appointment

**Guest: Trudy Litto**  
 The Great American Wheel Works  
 P.O. Box 125, New Baltimore, NY 12124  
 (518) 756-2368 tflitto@msn.com  
 www.trudylitto.com

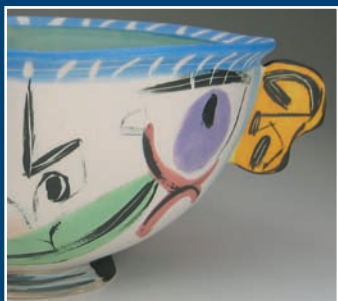
**Directions** – From Saratoga and north: I-87 to exit 12. Turn right onto Rt. 67, go to Rt. 50. Turn left onto Rt. 50, go 4.5 miles. From Schenectady: Rt. 5 to Scotia, right on Rt. 50 north for 8.6 miles. From Albany and east: I-87 N. to exit 9, left on Rt. 146 for 2.5 miles to Rt. 146A, right for 6.4 miles to Rt. 50, right on Rt. 50 north for 0.10 of a mile.




**Two Spruce Pottery**   
 Nancy Niefield  
 175 Jay Street Schenectady, New York 12305  
 518.393.5011 nancy@twospruce.com www.twospruce.com  
 Tuesday - Saturday – 11 a.m. - 5 p.m.

**Guest: Juergen Meier**  
 1007 Maryland Ave., Schenectady, NY 12308  
 (917) 992-1569  
 info@juergenmeier.com  
 www.juergenmeier.com

**Directions** – From NYS Thruway (90): 1. Take 890, Broadway exit. Go .7 mi. N. on Broadway to State Street (Rte. 5). Turn right (E.) on State Street. 2. Pass Proctor's Theatre on right and Jay Street pedestrian walkway on left. Park on State Street or go left on Clinton Street and park in the lot. From Route 50: Go S. to the end of Route 50. Turn left on Mohawk Avenue (Rte. 5). Cross the Mohawk River and you are on State Street. Follow directions from 2 above. From Rte. 7 (Troy): Go W. on Route 7 to Schenectady. Exit right onto State Street. Go 2.4 mi. on State Street. Go right on Clinton Street and park in lot. Walk up alleyway to Jay Street pedestrian walkway.



**Victoria Crowell Studio**   
 Victoria Crowell  
 376 Bald Mountain Road Troy, New York 12180  
 518.279.1105 victoriacrowell@verizon.net www.victoriacrowell.com  
 Open year round by appointment, or by chance.

**Guest: Mary Anne Davis**  
 davistudio  
 486 Pratt Hill Road, Chatham, NY 12037  
 (518) 392-7308 Maryanne@davistudio.com  
 www.davistudio.com

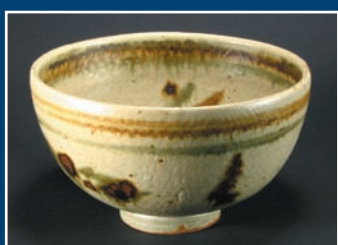
**Directions** – From Troy: Rt 7 east to light at Rt. 142. Twenty feet beyond light, turn left onto Sweetmilk Creek Rd, go 1 mile, take the left fork. Go 1 mile to Bald Mountain Rd., turn right, go 0.10 mile, studio is on the right. From the north and Rt. 40: turn left onto Rt. 142, go 1.4 miles, turn left onto Bellview Rd. Take the second right onto Bald Mt. Rd., go 1.7 miles to Sweet-milk Creek Rd., keep left. Studio is 0.10 mile on right.



**Ambrosia Porcelain**   
 Linda Aubry  
 153 Madison Street, Troy, NY  
 ambrosiaporcelain@gmail.com www.ambrosiaporcelain.com

**New Studio**

**Directions** – From Rte 7: Take the Hoosick Street exit and turn left at River St/US-4, 0.4 mi. Turn right at River St/US-4 S. Continue to follow US-4 S, 1.1 mi. Turn Right at Madison Street, 0.1 mi. We're on the left, a large ivory-colored brick duplex. From 90: Take 90 east to 787N. Turn east across Menands Bridge. Go North on 4th St. and turn left onto Madison.



**Ulla's Pottery**   
 271 McCormack Rd. N., Slingerlands, NY 12159  
 518.459.3844 ullasat@gmail.com  
 Open by appointment  
**AND**  
**Liz Vigoda Pottery**  
 518.439.4457 lizvigoda@verizon.net www.lizvigoda.com

**New Studio**

**Directions** – From 87 S, take exit 1 to 90. Take exit 4 to Slingerlands/Voorheesville to 85 S. Follow all roundabouts showing 85 W, until you get to 140 S. Take that and go 1/3 of a mile. Turn left onto McCormack Rd. North. Keep going to the last house on the right of this Dead End street, # 271. The Normanskill Creek is at the end of road.



Ulla Sattinger

Liz Vigoda

Join our e-mail list at [www.AlbanySaratogaPotteryTrail.com](http://www.AlbanySaratogaPotteryTrail.com)